

**Masters of Business Administration (MBA)**

**Entrepreneurship Development Policy**

(Amended as on 30<sup>th</sup> December, 2013 and applicable from 1<sup>st</sup> January, 2014)

---

Version	1.0
Authorized by	Director, JSPM's JSIMR

No part of this document should be reproduced or distributed without the prior permission of  
JSPM's JSIMR



## **INTRODUCTION**

JSPM's JSIMR initiated developing a new domain for students to develop the skills required for entrepreneurship. The ED Cell will take effort to connect students and entrepreneurs, where entrepreneurs will share their experience for setting up new ventures.

## **VISION-MISSION, OBJECTIVES:**

**Vision:** To be well acknowledged centre of brilliance for entrepreneurship development to create successful entrepreneurs.

**Mission:** To motivate aspiring entrepreneurs to become successful business leaders.

**Objectives set for ED are as follows:**

- To inculcate the values of entrepreneurial attitude among students & staff.
- To encourage ethnicity of innovation to enterprise among the students.
- To enable students to remain self-reliant in their employment.

The ED Cell is a student driven cell that is dedicated to become a catalyst in facilitating emergence of competent entrepreneurs and promoting, cultivating, and nurturing the entrepreneurial spirit that is unique. We aim to provide necessary support to students for achieving their entrepreneurial aspirations.

## **FOCUS AREAS**

Entrepreneurship Development Cell focuses on the following areas:-

- Preparing business plan
- Conducting Workshop/ Seminars
- Interaction with Entrepreneurs

## **UNDERTAKING ED CELL ACTIVITIES**

Entrepreneurship Development Cell undertakes those activities which are identified by Entrepreneurship Development team and gets approval from authority

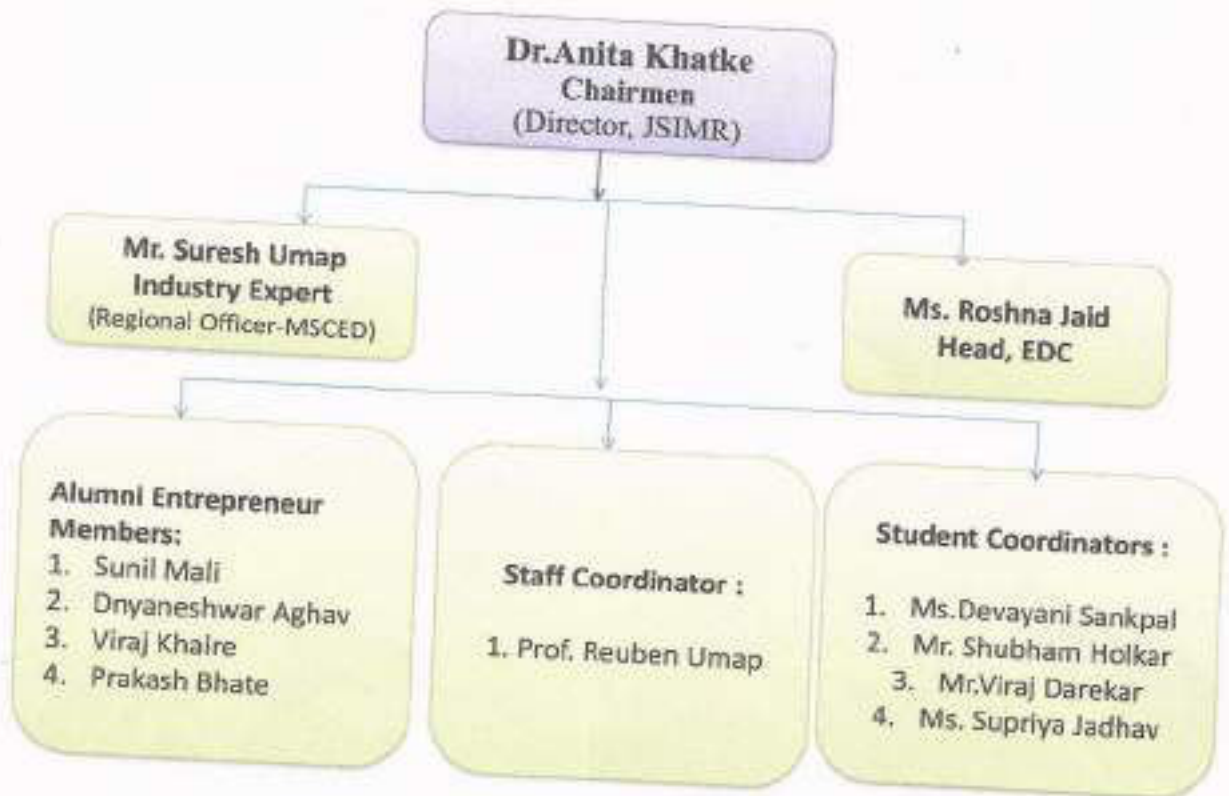
## **LOCATION OF ED CELL EFFORTS**

The Entrepreneurship Development Cell committee will decide the locations for its activities.

## **COMPOSITION OF ED CELL COMMITTEE**

The Committee shall consist of the following:

- Director of MITSOM, Chairperson
- Faculty Representative of Entrepreneurship Development Cell
- Alumni Student Representative of Entrepreneurship Development Cell
- Industry Expert



### RESPONSIBILITIES OF THE COMMITTEE

The responsibilities of the Entrepreneurship Development Cell Committee include:

- Identifying activities and recommending to the Committee
- Preparing Budget of expenditure for the activities, and
- Monitoring activities from time to time
- MOU's with various agencies / bodies
- Conducting activities with various agencies / bodies
- Creation of network with entrepreneurs, family business experts, consultants, financial organizations etc.
- Hand over all the documents to IQAC Committee

Date:

Place:

Dr. Anita Khatke

Director,

JSPM's JSIMR, Hadapsar, Pune  
**DIRECTOR**  
 J.S.P.M.'s  
 Jayawantree Sawant Institute  
 of Management & Research  
 Hadapsar, Pune - 411 028